



## HRC BLUE

### 高效新風熱回收機組

High Energy-saving Heat Recovery Unit



**NEW**



威特奇集團自1954年在米蘭成立以來，已成為通風、空調、空氣清潔和供暖的代名詞。Vortice®在義大利、英國、中國、拉美、西班牙及世界各地的眾多國家開展業務。威特奇集團一直致力於新產品的研發，並在此方面投入了大量資金以確保產品的可靠性、實用性及美觀性。正是基於該前瞻策略使Vortice®品牌在全球同行業市場上佔據重要地位。至今，Vortice®威特奇每年出產400多種通風、供熱產品，具備歐洲最大通風實驗室之一，產品多次榮獲歐洲工業產品設計大獎。

Established in Milan since 1954, the Vortice® name has become synonymous with ventilation, air conditioning, air cleaning and heating. Vortice operates in Italy, UK, China, Latam, Spain and numerous agencies throughout the world. Vortice has been dedicated to develop new products and ensure the reliability, practicality and aesthetics of products. Based on these, Vortice has achieved leadership in the European market. Till now, Vortice produces over 400 kinds of ventilation and heating products for domestic, commercial and industrial applications. It owns one of the biggest ventilation lab in Europe and has achieved several times the “Compasso d’Oro”, an European Industrial product design award.



英國 ENGLAND



威奇英國公司  
Vortice UK

義大利 ITALY



成功收購義大利LORAN  
品牌並更名為  
Vortice Industrial  
Acquisition of Loran  
Currently Vortice Industrial



拉丁美洲 LATAM



威奇拉丁美洲公司  
Vortice Latam

中國 CHINA



威奇中國公司  
Vortice China

西班牙 SPAIN



成功收購西班牙百年通風  
品牌Casals  
Acquisition of Casals Spain  
in 2019







# 為什麼要通風？

## WHY VENTILATE?

### 我們呼吸的空氣非常重要！

The air we breath is very important!

在家中沒有良好的室內空氣品質影響是巨大的。我們每天會花費90%的時間呆在室內，呼吸被污染的空氣會導致健康出現問題。

The effect of not having good indoor air quality in the home is dramatic. People spend 90% of time at home, so breathing in stale air can lead to health issue.

新建的房屋變得更加不透氣，這意味著很難通過建築物呼吸到新鮮空氣。長期在密閉的環境中會導致健康問題。

Newer houses have become more air tight which means it is harder to get a fresh air path through the building. Breathing in stale contaminated environments can lead to health issues.



### 室內空氣不良會導致過敏等健康問題

The effects of poor indoor air quality can lead to a number of health issues and allergies:

- 頭痛 Headaches
- 疲勞 Fatigue
- 噁心 Nausea
- 流行性感冒 Flu
- 哮喘等呼吸問題 Respiratory Issues such as asthma



### 影響室內空氣質量的因素

Factors that can lead to an unhealthy indoor air quality can be:

- 建築材料 Building materials
- 香煙 油煙 Cigarette fumes
- 油漆 Paint
- 清潔劑 Cleaning products
- 動物 Animals
- 烹飪 Cooking



# 一鍵操作 自定義風速 隨時掌握室內空氣質量

Smart operation, monitoring indoor air quality all the time



適用建築面積  
最多達220m<sup>2</sup>  
For areas  
up to 220 m<sup>2</sup>



體感舒適  
Comfortable  
experience



可視溫度/濕度/PM2.5  
CO<sub>2</sub>/TVOC  
Display Temp, RH, PM2.5,  
CO<sub>2</sub>, TVOC



智能家居集控  
Modbus  
centralized control

## 5種模式 5 modes



自動模式  
Automatic mode



定時模式  
Timer mode



手動模式  
Manual mode



假日模式  
Holiday mode



夜間模式  
Night mode

CODE: 47320

## 3大功能 3 functions



熱回收  
Heat Recovery



單排風  
Exhaust air



新風  
Fresh Air

# 24H清新空氣 極致過濾 呼吸潔淨

24 hours providing purified fresh air with excellent filtration system

PM  
2.5



去除率99%  
Removal efficiency  
can reach 99%

24H新風  
24 hours fresh air

濾網提醒  
無工具更換  
Filter alarm  
Tools free maintenance

線上服務更換耗材  
Online service  
for spare parts

可選擇H13濾網，防護升級  
H13 filter, protection upgrade  
有效阻止病毒傳播，包括新  
冠病毒

Can help to prevent virus from  
spreading, including Covid-19

無需工具，維護便捷

No tools required, easier and quicker  
maintenance

磁吸式濾網蓋板，可自行更換濾網

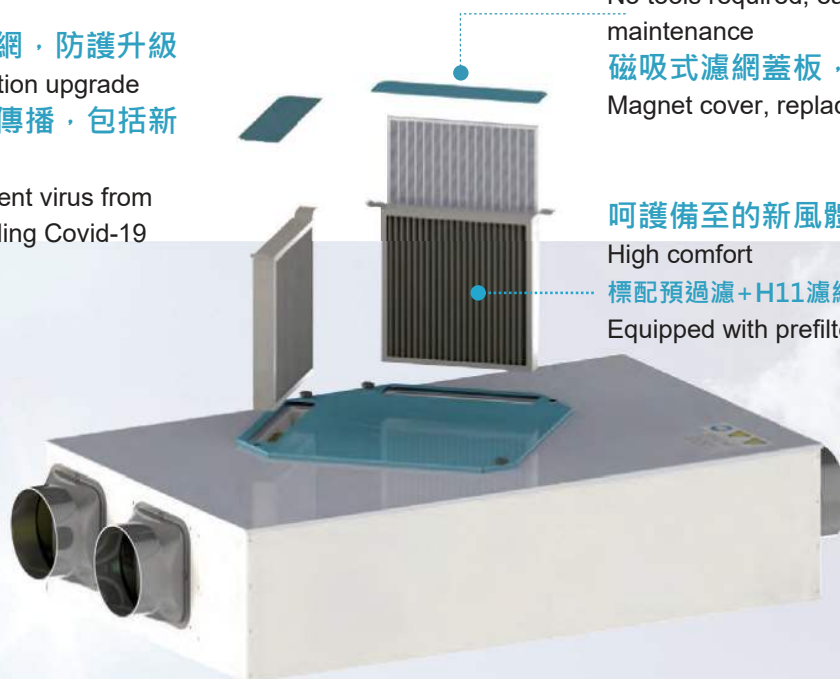
Magnet cover, replacing filter by yourself

呵護備至的新風體驗

High comfort

標配預過濾+H11濾網

Equipped with prefilter and H11 filter



編號 Code	型號 Models	濾網 Filters
47206	HRC/BLU 150-250	H11 過濾網 Filter (2片 2 Pieces)
47734		H13 抗菌過濾網 Antibacterial Filter (2片 2 Pieces)
47213	HRC/BLU 350-450	H11 過濾網 Filter (2片 2 Pieces)
47735		H13 抗菌過濾網 Antibacterial Filter (2片 2 Pieces)

# 為什麼選擇EC電機？

## 更高性能，更加安全，更長壽命

Why EC motor? Higher performance, More safe, Longer life.



低能耗EC電機  
Low power consumption  
EC motor



運行安全  
Running safely



超低靜音  
Ultra-silent



4檔風量調節  
4-speeds

### 緊湊的體積

Compact size

### 節約安裝空間

Saving installation space

### 節能最高可達20%

Energy saving up to 20%

### 低能耗適合24小時運行

24-hour operation with low energy consumption

### 無極調速，操作簡便

Stepless speed, easy to operate

### 恆速，恆風量，通風效率提高

Constant speed, constant airflow, higher ventilation efficiency

### 運行平穩，超低噪音

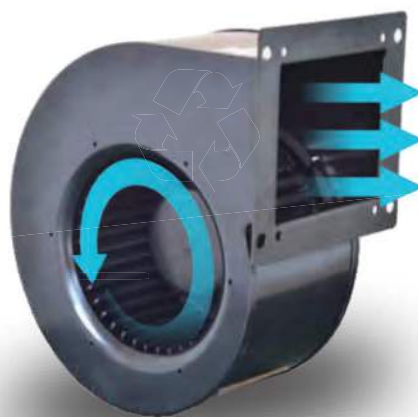
Stable running, ultra-low noise

### 有自我保護功能

Self-protection function

### 異常情況時自動保護，更安全

Automatic protection when abnormal situations occurs, more safe





# 為什麼選擇石墨烯？

## 黑科技更節能，更高效，更省錢

Why graphene? Higher efficiency, Higher energy-saving, More cost-saving.



有效防止  
霉菌細菌生長

Mildew and mold proof  
thanks to low humidity



可水洗熱交換芯體  
節省耗材

Washable heat exchanger  
Saving spare-part cost



抗高低溫  
結露點低

High and low  
temperature resistance  
Dewpoint retardation



超高熱回收效率  
大大減少能耗

High heat recovery  
efficiency, reduce the  
energy consumption

**CNAS認證防霉等級0級；抗菌率：大腸杆菌 $\geq 99\%$ ；金黃色葡萄球菌 $\geq 99\%$**

CNAS certification: Mold-proof grade of 0; Antibacterial rate: escherichia coli  $\geq 99\%$ ; Staphylococcus aureus  $\geq 99\%$

**比普通紙芯風阻小5%-10%，風量波動範圍在5%以內**

The airflow resistance is 5%-10% lower than the common paper exchanger, and the airflow fluctuation range is within 5%

**全熱交換芯氣密性 $\geq 98\%$**

Air tightness of the heat exchanger over 98%

**耐腐蝕性能的高分子膜材，使用壽命可長達10年以上**

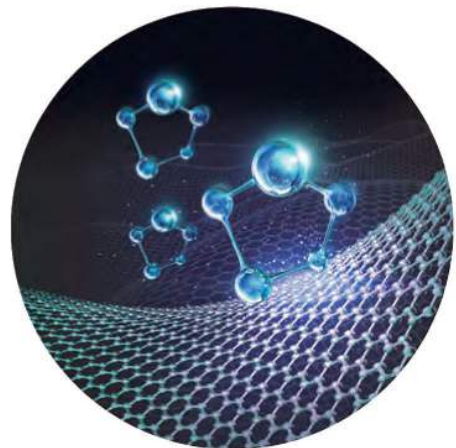
The polymeric membrane material with corrosion resistance has a service life of more than 10 years

**親水性及水分子的高通透性能，使表面沒有冷凝水形成，在零下等極端溫度條件下不會產生結露、冰堵現象**

No condensate formed thanks to the material of hydrophilicity and high permeability of water, even under the extreme unfavorable conditions

**石墨烯熱交換芯體保證了潛熱回收效率。顯熱和潛熱的高效回收保證了熱交換芯具備業界領先水平的焓效率，在同樣規格尺寸下焓效率比紙芯的高2%-5%**

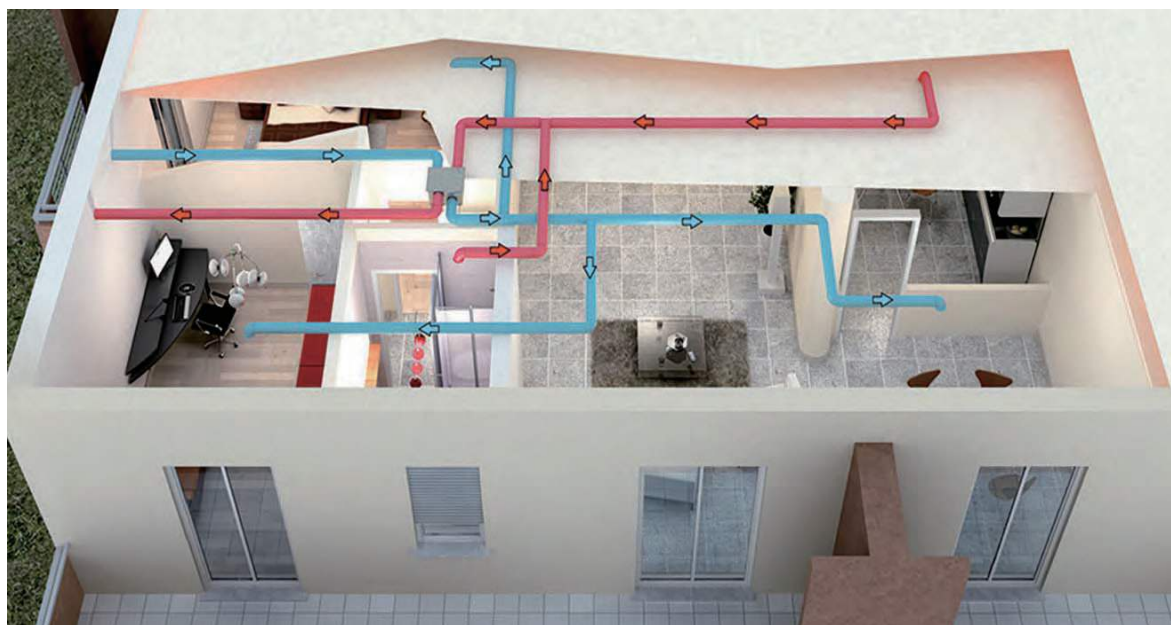
The graphene exchanger ensures the recovery efficiency of latent heat. Its high efficiency guarantees the leading position in enthalpy exchange industry. At the same size, its enthalpy efficiency is 2-5% higher than the paper core.



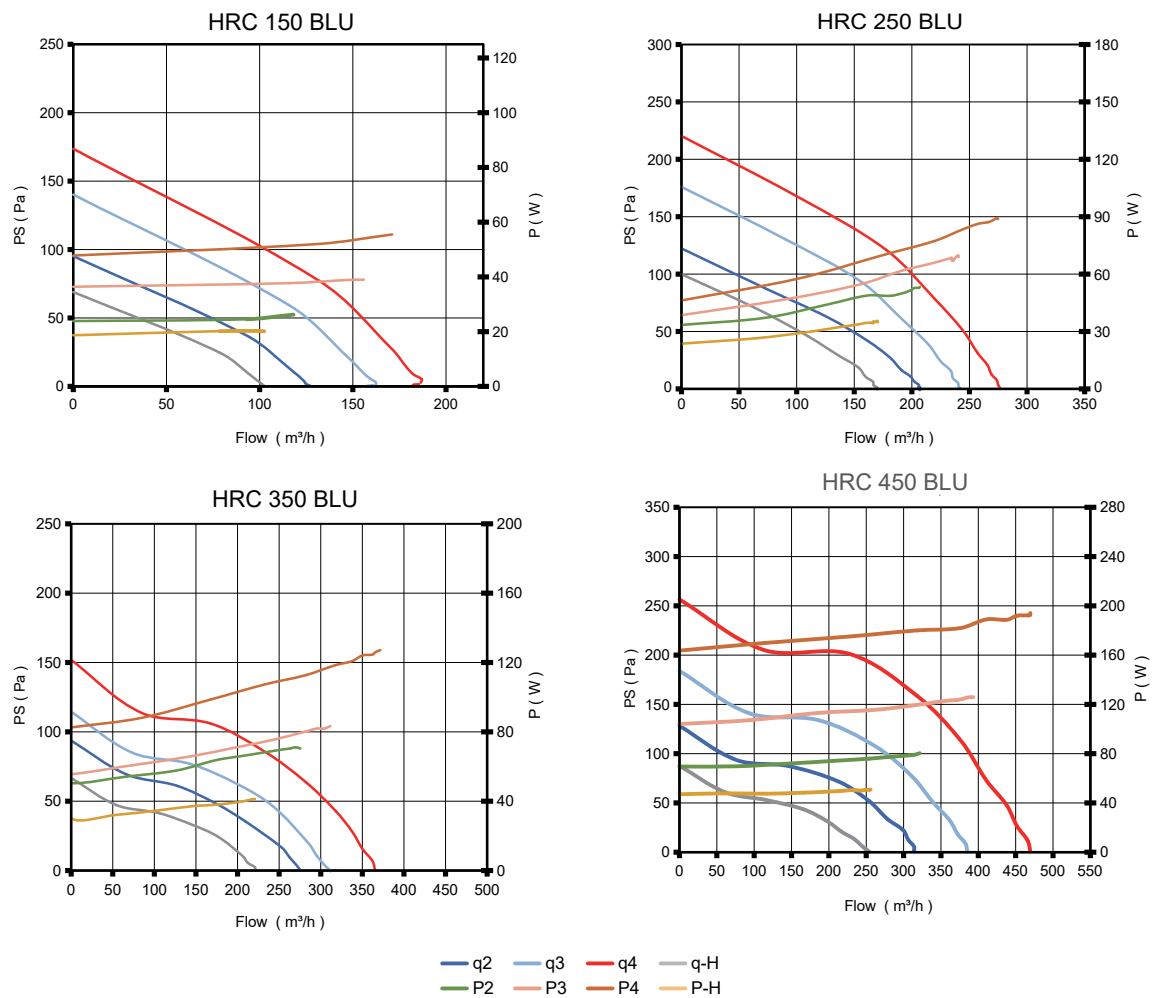
## 技術參數 Technical Data

項目Item No.	單位Unit	HRC 150 BLU Code: 81287	HRC 250 BLU Code: 81305	HRC 350 BLU Code: 81323	HRC 450 BLU Code: 81324
最大功率 Max power	[W]	53	89	131	203
-+*/AC 額定輸入電壓 AC input rated voltage	[V]	220	220	220	220
額定輸入頻率 Input rated frequency	[Hz]	50/60	50/60	50/60	50/60
最大新風風量 Maximum fresh air volume	[M³/h]	164	272	360	470
最大靜壓 Maximum static pressure	[Pa]	175	220	152	260
檔位Air speed	level	4	4	4	4
熱交換效率 Heat exchanger efficiency	%	高達86% up to 86%	高達82% up to 82%	高達81% up to 81%	高達79% up to 79%
噪音 Noise	[dB]	≤30	≤40.5	≤43	≤46
過濾器 Filter	新風/ Fresh airH11+ G2    排風/Exhaust airH11				
淨化效率 Purification efficiency	[%]	>99	>99	>99	>99
電機 Motor	N.A.	EC 電機 EC motor			
傳感器 Sensor	N.A.	PM2.5、溫度、濕度、VOC、二氧化碳 傳感器 PM2.5、Temperature Humidity VOC、CO <sub>2</sub> sensor			
顯示器 Display	3.5寸觸控彩屏 3.5 inch colorful touch screen				
控制方法 Control	觸控、RS485 Touch control RS485				
產品尺寸 (帶風) Product Size(with spigots)	[mm] W x D x H	1066*613*241	1045*613*241	1203*687*263	1203*687*263
淨重 Net weight	[kg]	24.5	25	27	27.5

## 安裝 Installation



## 性能曲線 Performance Curves



## 應用 Applications



住宅 House



辦公室 Office



圖書館 Library



教室 Classroom



健身房 Gym



SPA會所 Spa club



聯繫我們

[Contact Us Now](#)

沃特奇企業有限公司

地址：100台北市中正區中山北路一段2號4樓之3

聯絡電話：02-77251260

官方網址：[vortexfresh.com.tw](http://vortexfresh.com.tw)

@v.green

